



ADVANCE TRUCK TYRE CATALOGUE **EUROPE**

WWW.ADVANCETYRE.COM

A T Y R E
ADVANCE

ABOUT US

Making Your Safety Our Priority Since 1958

Established in 1958, GTC (Guizhou Tyre Co., Ltd) is one of the Chinese leading tyre manufacturers, the home of ADVANCE brand with production bases in China and Vietnam.

GTC relies on the strong R&D strength and focuses on new industrialization and continuously drives the internationalized, intelligent, green and high-quality development.

GTC has a complete product specifications and models and the products have been popularly sold to 130+ countries and regions.

The company's products have been authenticated by ISO9001 quality system certificate, ISO/TS 16949 quality system certificate, 3C, DOT, E-MARK, GCC, SNI, BIS and INMETRO certificates.



NO.1

Leading Specialty Tyre and TBR Manufacturer in China



30

Ranked #30 worldwide in Top Tyre Manufacturers in 2023



WHY CHOOSE ADVANCE

- **One-stop Business Solutions Provider**

- 4 major categories
- 9 subcategories
- 3000+ SKUs

- **Value Solutions Provider**

The quality of the product is between tier **1&2**, the price of the product is between tier **3&4**

- **Technical Solutions Provider**

- ≥3% R&D investment annually
- 1 national tyre technology R&D center and a postdoctoral workstation
- 30+ FE support in the field
- 1000+ R&D personnel undertaking high-quality products and technologies

- **Market Oriented & Best Customer Experience**

- Issuing PI: in **48h** after getting the orders
- Leading time: **30-45** working days
- Claim: reply in **7** working days
- Warranty: **5** years from DOT

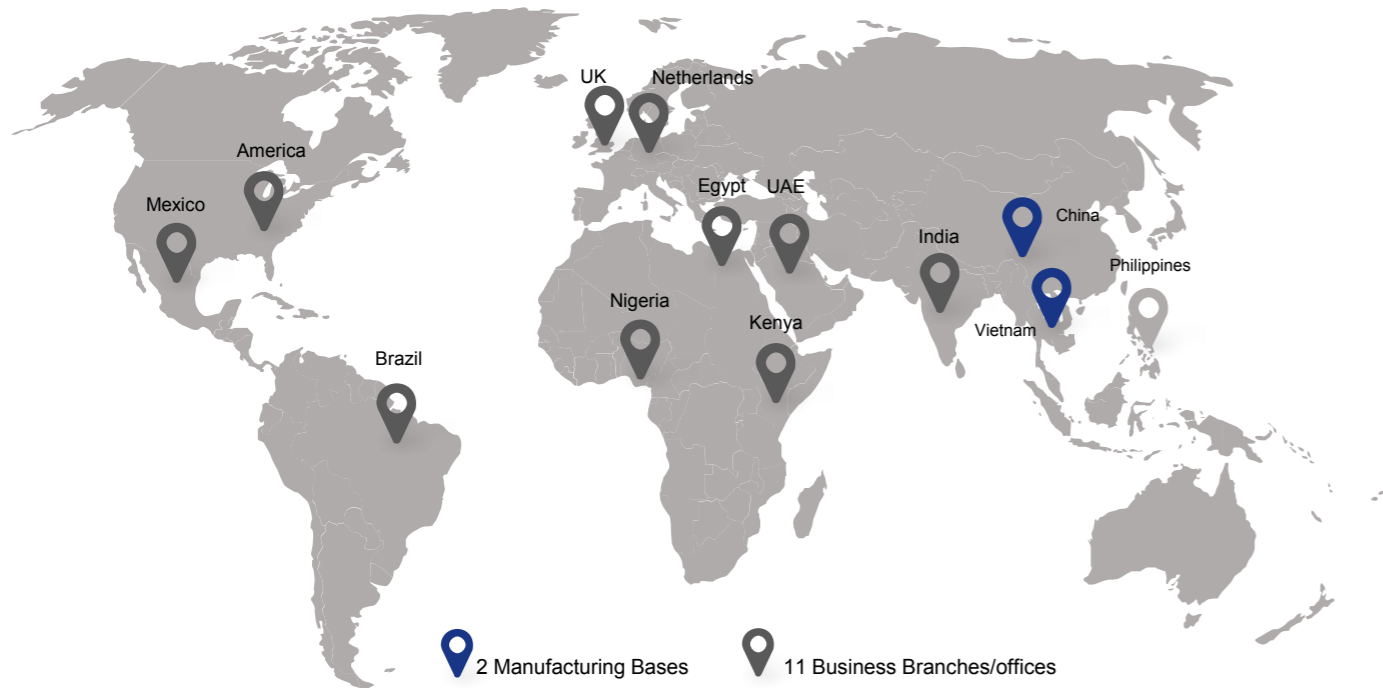
- **Intelligent Manufacturing**

5G and **AI** built smart and lean production management processes. Achieving intelligent manufacturing is our pursuit and strategy.

- **Sustainability**

We are committed to reaching all **carbon neutral** and **social responsibility** goals.

■ Global Localized



■ Marketing



TABLE OF CONTENTS

	REGIONAL	MIXED ROAD	OFF ROAD	BUS
STEER	<p>GR-S ① P 06</p>			
DRIVE	<p>GR-D ① P 07</p>	<p>GR-D ② P 08</p>	<p>GC-D ① P 15</p>	
TRAILER	<p>GR-T ① P 09</p>	<p>GR-T ② P 10</p>		
	<p>GL251T P 11</p>	<p>GC-T ① P 16</p>		
ALL POSITION	<p>GR-A ① P 12</p>	<p>GC-A ① P 17</p>	<p>GM-A ① P 19</p>	<p>GU-A ① P 21</p>



GR-S ①

- The unique groove design and extra deep under tread enhance the tyre's self-cleaning ability and puncture resistance, ensuring optimal safety.
- Optimized groove design improves drainage capability and wet grip performance.
- The extra deep pattern provides a longer service life for the tyre.
- Thicker sidewall design effectively protects against scraping, offering optimal sidewall protection.
- Special tread compound reduces rolling resistance and fuel consumption.
- Super strong bead with a patented design provides excellent carrying capacity and resistance to failure.

Size	Load Index	Speed Rating	EPREL Codes ³	RR	WG	NG Db	M+S	TRACTION	3PMSF
385/65R22.5	164	K		B	B	71	•		•
385/55R22.5	160	K		B	B	71	•		•



GR-D ①

- An open shoulder regional drive tyre designed for fuel efficiency, longer wear, and exceptional retreadability.
- The GR-D ① delivers high performance and value in demanding applications.
- Excellent wear and cutting resistance result in longer mileage and increased safety.

Size	Load Index	Speed Rating	EPREL Codes	RR	WG	NG Db	M+S	TRACTION	3PMSF
295/80R22.5	152/148	M	1192741	C	C	73	•	•	•
295/80R22.5	154/149	M	1205130	C	C	73	•	•	•
315/70R22.5	154/150	L	1192744	C	C	73	•	•	•
315/70R22.5	156/150	L	1192747	C	C	73	•	•	•
315/80R22.5	156/150	L	1192750	C	C	73	•	•	•



GR-D ②

- Excellent mileage performance.
- Versatile multipurpose drive tyre suitable for a wide range of conditions.
- Superb traction.
- High resistance to irregular wear.
- Excellent durability and retreadability.
- M+S and 3PMSF markings.

Size	Load Index	Speed Rating	EPREL Codes	RR	WG	NG Db	M+S	TRACTION	3PMSF
215/75R17.5	126/124	M	1193131	D	C	70	•	•	•
235/75R17.5	132/130	M	1181583	C	C	70	•	•	•
245/70R17.5	136/134	M	1192720	C	C	70	•	•	•
245/70R19.5	136/134	M	1192723	C	C	70	•	•	•
265/70R19.5	140/138	M	1192726	C	C	70	•	•	•
285/70R19.5	146/144	L	1192732	C	C	70	•	•	•
275/70R22.5	148/145	M	1192729	C	C	70	•	•	•
295/60R22.5	150/147	K	1192735	C	C	70	•	•	•
315/60R22.5	152/148	L	1205106	C	C	70	•	•	•
315/60R22.5	154/150	L	1192738	C	C	70	•	•	•



GR-T ①

- Features new rubber compounds to minimize heat development in the tread.
- The tread polymer improves rolling resistance and fuel efficiency.
- Robust casing for longer tyre life and excellent retreadability.
- M+S and 3PMSF markings.

Size	Load Index	Speed Rating	EPREL Codes	RR	WG	NG Db	M+S	TRACTION	3PMSF
215/75R17.5	135/133	J	1181586	D	B	71	•	•	•
235/75R17.5	143/141	J	1181589	C	B	71	•	•	•
245/70R19.5	141/140	J	1181595	C	B	71	•	•	•
265/70R19.5	143/141	K	1181595	C	B	71	•	•	•
275/70R22.5	148/145	M	/	C	B	71	•	•	•
285/70R19.5	150/148	J	1192762	C	B	71	•	•	•



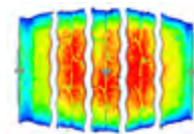
GR-T ②

- Features new rubber compounds to minimize heat development in the tread.
- The tread polymer improves rolling resistance and fuel efficiency.
- Robust casing for longer tyre life and excellent retreadability.
- M+S and 3PMSF markings.

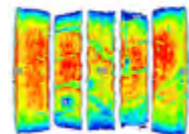


385/55R22.5 Foot Print Test

Brand	Pattern	RR
ADVANCE	GR-T ②	
BRAND B	PATTERN B	



ADVANCE



BRAND B

Size	Load Index	Speed Rating	EPREL Codes	RR	WG	NG Db	M+S	TRACTION	3PMSF
385/55R22.5	160	K	1192765	B	B	72	•		•
385/65R22.5	160	K	1192768	B	B	72	•		•
385/65R22.5	164	K	1192771	B	B	72	•		•



GL251T

- Engineered to replace duals on highway and regional trailer axle fitments.
- Advanced tread compound offers a balance of fuel efficiency, wet traction, and long even wear.
- The new generation wide base tyre for trailer axles delivers exceptional weight savings and fuel efficiency in regional and long-haul applications.
- Trailer Use Only.

Size	Load Index	Speed Rating	EPREL Codes	RR	WG	NG Db	M+S	TRACTION	3PMSF
385/55R19.5	156	J	1192792	B	C	72	•		•
435/50R19.5	160	J	1181598	B	C	72	•		•
445/45R19.5	160	J	1205082	B	C	72	•		•
455/40R22.5	160	J	1205085	B	C	72	•		•

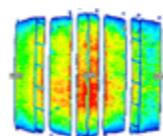


GR-A ①

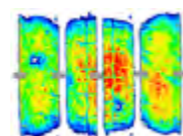
- Regional all-position tyre engineered for fuel efficiency, longer wear, and exceptional retreadability.
- The GR-A① delivers high performance and value in demanding applications.
- Ultra-high safety for a variety of rugged road driving conditions.

245/70R17.5 Foot Print Test

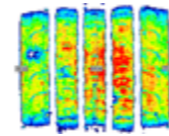
Brand	Pattern	RR
ADVANCE	GR-A ①	
BRAND B	PATTERN B	
BRAND C	PATTERN C	



ADVANCE



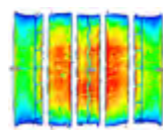
BRAND B



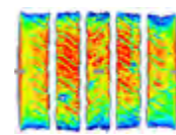
BRAND C

315/70R22.5 Foot Print Test

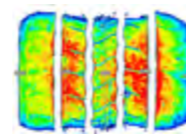
Brand	Pattern	RR
ADVANCE	GR-A ①	
BRAND B	PATTERN B	
BRAND C	PATTERN C	



ADVANCE



BRAND B



BRAND C

Size	Load Index	Speed Rating	EPREL Codes	RR	WG	NG Db	M+S	TRACTION	3PMSF
215/75R17.5	126/124	M	1193134	D	B	71	•	•	•
235/75R17.5	132/130	M	1181565	C	B	71	•	•	•
245/70R17.5	136/134	M	1181568	C	B	71	•	•	•
245/70R19.5	136/134	M	1192693	C	B	71	•	•	•
265/70R19.5	140/138	M	1192696	C	B	71	•	•	•
285/70R19.5	146/144	L	1192699	C	B	71	•	•	•
275/70R22.5	148/145	M	1205091	C	B	71	•	•	•
295/60R22.5	150/147	K	1192702	C	B	71	•	•	•
295/80R22.5	152/148	M	1192705	C	B	71	•	•	•
295/80R22.5	154/149	M	1192708	C	B	71	•	•	•
315/60R22.5	152/148	L	1205094	C	B	71	•	•	•
315/60R22.5	154/150	L	1192711	C	B	71	•	•	•
315/70R22.5	154/150	L	1192714	C	B	71	•	•	•
315/70R22.5	156/150	L	1192717	C	B	71	•	•	•
315/80R22.5	156/150	L	1193125	C	B	71	•	•	•



GC-D ①

- Outstanding traction and excellent on/off road wear performance.
- Features a robust 4-belt layer casing for maximum retreadability.
- M+S and 3PMSF markings.



Size	Load Index	Speed Rating	EPREL Codes	RR	WG	NG Db	M+S	TRACTION	3PMSF
13R22.5	156/150	K	1192789	D	B	73	•	•	•
295/80R22.5	152/148	K	1205118	D	B	73	•	•	•
315/80R22.5	156/150	K	1192786	D	B	73	•	•	•



GC-T ①

- Open shoulder design enhances tyre adaptability to various mixed road conditions during transportation.
- Good heat dispersion ensures excellent durability.
- Excellent compound provides super strong abrasion resistance.
- Optimized crown design enhances puncture resistance.
- Strengthened carcass design ensures longer service life and multiple retreading possibilities.
- Trailer Use Only.

Size	Load Index	Speed Rating	EPREL Codes	RR	WG	NG Db	M+S	TRACTION	3PMSF
385/65R22.5	160	K	1193137	D	C	71	•		•
385/65R22.5	164	K	1192813	D	C	71	•		•
445/65R22.5	169	K	1192410	D	C	71	•		•



GC-A ①

- Built with durability and extended life.
- Ideal for concrete mixers, dump trucks, and waste/sanitation trucks in a variety of wide base on-and-off highway applications.
- Good wear resistance for longer mileage and increased service life. Offers excellent overall and economic performance.

Size	Load Index	Speed Rating	EPREL Codes	RR	WG	NG Db	M+S	TRACTION	3PMSF
11R22.5	148/145	L	1205112	D	C	71	•		•
13R22.5	156/150	K	1192816	D	C	71	•		•
295/80R22.5	152/148	K	1205115	D	C	71	•		•
315/80R22.5	156/150	K	1193134	D	C	71	•		•



GM-A ①

- The tyre features a large block pattern design for excellent traction performance.
- The high-end contour design ensures even ground pressure distribution, resulting in high wear mileage.
- With a new formula design, the tyre exhibits superior resistance to cutting and tearing.
- The optimized distribution of bead materials enhances the durability of the tyre's bead.



Size	Load Index	Speed Rating	EPREL Codes	RR	WG	NG Db	M+S	TRACTION	3PMSF
315/80R22.5	158/156	G		D	C	73	•		•



GU-A ①

- Self-cleaning technology in the tread groove and ultra-thick tread bottom rubber design provide excellent dirt resistance and puncture resistance, ensuring optimal safety.
- Optimized groove shape improves drainage performance and wet skid resistance.
- Super deep pattern provides a longer service life.
- Thickened sidewall design effectively protects the shoulder from scratches and provides optimal sidewall protection.
- Special tread formula offers better resistance and fuel consumption.
- Patented super-strong bead toe design provides the tyre with excellent load-bearing capacity and resistance to cracking.



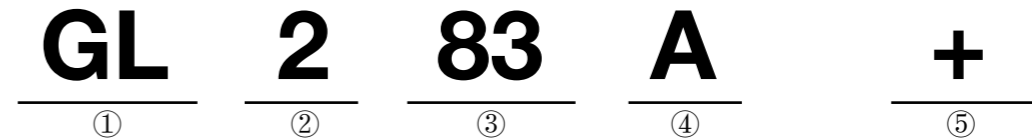
Size	Load Index	Speed Rating	EPREL Codes	RR	WG	NG Db	M+S	TRACTION	3PMSF
275/70R22.5	148/145	G		D	C	72	•		

ADVANCE TYRE SIDEWALL MARKS INSTRUCTION



- ① Brand Name
- ② Manufacturing Country
- ③ Safety Warning
- ④ Carcass Struction, Tyre Type, Rim, Regroovable
- ⑤ Recommended Vehicle Type & Position
- ⑥ Pattern Name
- ⑦ Dot Code
- ⑧ Application
- ⑨ M+S
- ⑩ Load index, Speed Symbol
- ⑪ Tyre Size
- ⑫ Ply rating, Load Range
- ⑬ Blank For Retread Tyre Brand

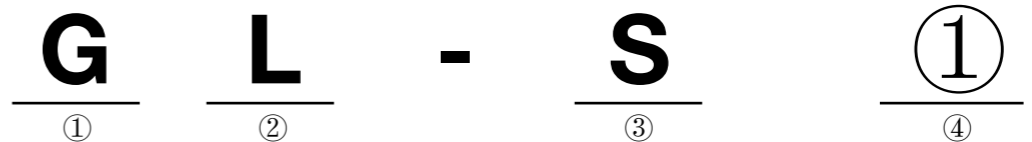
TREAD PATTERN DESIGNATIONS



- ① GuiZhou Radial Tyre
- ② Application
- ③ Serial Number
- ④ Position
- ⑤ Benefit

For example:

Application	1 = Long Haul Highway Service
	2 = Reginal Service
	6 = On & Off Road Service
	7 = Snow Service
	8 = Urban Buses Service
Position	9 = Off Road Service
	0 = Special Service
	S = Steer
	A = All Position
Benefit	D = Drive
	T = Trailer
	+ = Reinforced Bead Design
	ULT = Ultra Design



- ① GuiZhou Radial Tyre
- ② Application
- ③ Position
- ④ Serial Number

For example:

Application	L = Long Haul Highway Service
	R = Reginal Service
	C = Construction Service
	M = Mining Service
	U = Urban Service
Position	S = Steer
	A = All Position
	D = Drive
	T = Trailer

TECHNICAL DATA NOTE

- 1. TBA - to be available
- 2. PART NO. - SAMSON No.
- 3. ERP NO. - ADVANCE No.
- 4. L*-LOW ROLLING RESISTANCE
- 5. 3Pro*-With super safety, excellent wear resistance, high fuel efficiency and remarkable comfort, the products of Guizhou Tyre are preferred for your long-distance and hazardous-chemicals transport.

PLY RATING / LOAD RANGE	
PLY RATING	LOAD RANGE
2	A
4	B
6	C
8	D
10	E
12	F
14	G
16	H
18	J
20	L
22	M

SPEED SYMBOL		
SPEED SYMBOL	SPEED CATEGORY (KM / H)	MPH
F	80	50
G	90	55
J	100	62
K	110	68
L	120	75
M	130	81
N	140	87

INTERNATIONAL LOAD INDEX NUMBER								
LOAD INDEX	KGS	LBS	LOAD INDEX	KGS	LBS	LOAD INDEX	KGS	LBS
90	600	1325	117	1285	2835	144	2800	6175
91	615	1355	118	1320	2910	145	2900	6395
92	630	1390	119	1360	3000	146	3000	6610
93	650	1435	120	1400	3085	147	3075	6780
94	670	1475	121	1450	3195	148	3150	6940
95	690	1520	122	1500	3305	149	3250	7160
96	710	1565	123	1550	3415	150	3350	7390
97	730	1610	124	1600	3525	151	3450	7610
98	750	1655	125	1650	3640	152	3550	7830
99	775	1710	126	1700	3750	153	3650	8050
100	800	1765	127	1750	3860	154	3750	8270
101	825	1820	128	1800	3970	155	3875	8540
102	850	1875	129	1850	4080	156	4000	8820
103	875	1930	130	1900	4190	157	4125	9090
104	900	1985	131	1950	4300	158	4250	9370
105	925	2040	132	2000	4410	159	4375	9650
106	950	2095	133	2060	4540	160	4500	9920
107	975	2150	134	2120	4675	161	4625	10200
108	1000	2205	135	2180	4805	162	4750	10500
109	1030	2270	136	2240	4940	163	4875	10700
110	1060	2335	137	2300	5070	164	5000	11000
111	1090	2405	138	2360	5205	165	5150	11400
112	1120	2470	139	2430	5355	166	5300	11700
113	1150	2535	140	2500	5510	167	5450	12000
114	1180	2600	141	2575	5675	168	5600	12300
115	1215	2680	142	2650	5840	169	5800	12800
116	1250	2755	143	2725	6005	170	6000	13200

TYRE MAINTENANCE&SERVICE TIPS FOR COMMERCIAL TRUCK TYRES

- Never exceed your tyre’s maximum recommended speed which may be lower than posted speed limits.
- Select the suitable tyre on the basis of proper tyre size, load carrying capacity, acceleration capability and service type.
- Set and maintain proper cold inflation pressure.
- Check your tyres frequently for damage such as cuts, cracks, bulges and penetrations.

TYRE INSPECTION

- Every tyre (including the spare tyre) should be inspected prior to driving the vehicle. For example, check the tyres for cuts, bruises, cracks, bulges and penetrations. If any damage is found, the tyre should be inspected by the dealer of Guizhou Tyre. The damaged tyre shall be repaired as soon as possible in order to avoid further deterioration of the tyre structure
- As regulated by Federal law that front-axle tyres on the truck over 10,000 lbs in gross weight shall have a tread depth of at least 4/32” Tread wear indicatoris contained in the tread of Guizhou Tyre truck tyre and become visible when the tread depth reaches 2/32’ in two adjacent major grooves.
- Drive and trailer tyres should be replaced when the tread depth reaches 2/32” or the wear bars appear. Since 2/32” is the minimum and allowable legal tread depth on all axles except the front.
- Tyres should also be inspected before being fitted to the rims. Guizhou Tyres teeltube type truck tyres are shipped with the flap in the tyre. It is essential to disassemble and check the tyre thoroughly prior to mounting to ensure the inside surfaces are completely dry and clean.
- Water in the casing of steel radial tyre may cause tyre failure. In normal operation, heat build-up inside the tyre will turn water into vapor which may permeate the inner liner and enter the steel casing cord, leading to rust, deterioration possible sudden tyre failure, property damage and/or personal injury.

TYRE INSTALLATION AND OTHER SERVICING**SAFETY WARNING**

- It may be dangerous to remove and replace tyres. Attempting to install tyres with improper tools or procedures may result in tyre explosion, causing serious personal injury or death. This can be done only by qualified tyre repair professionals.
 - Never initiate repair procedures without proper training, tools and equipment.
 - This manual is not intended to provide proper training or service procedures for tyre installing, demounting, balancing, rotation, or repairing. Please leave these tasks to qualified tyre service professionals.
 - Only specially trained persons should mount tyres.
-
- It is dangerous to inflate an unsecured tyre. If the tyre bursts, it could be hurled into the air with explosive force, resulting in serious personal injury or death.
 - Stand well clear of any tyre under mounting. This is especially important when the service operator inflates the tyre.
 - When inflating the tyre after mounting it on a rim/wheel, please use a safety cage and an extension hose with pressure gauge and clip-on chuck.
 - Never adjust the inflation pressure of the truck tyre unless it is placed in a safety cage or secured to the vehicle or a tyre mounting machine.
 - Never stand or lean over the tyre or in front of the valve when inflating.
-
- Never pour or spray any flammable substance onto a tyre, rim or wheel for any purpose whatsoever, because the residue of such substance could result in a fire or explosion, further causing severe injury or death.
-
- Never put a flammable substance such as gasoline or ethyl into a tyre and light with a match/flame in order to seat the bead of the tubeless tyre. This practice is extremely dangerous and may result in a severe explosion or undetected damage to the tyre, rim and wheel which may cause breakdown, resulting in severe injury or death.

TYRE INSTALLATION AND OTHER SERVICING

- Tyres shall match the width and diameter of the wheels. For example, $\phi 22.5$ " tyres shall only be mounted to $\phi 22.5$ " rims/wheels. Radial tyres shall only be mounted to wheels approved for radial tyres.
- Inspect the tyre and rim/wheel. The rims/wheels shall be free of cracks, dents, chips, and rust. The beads shall be free of damage, cuts, punctures, foreign matter, and moisture.
- For a tubeless truck tyre, fit a new valve, or new valve core and cap when mounting a new tyre or retreading the tyre each time.
- For a tube type truck tyre, use new tube and flap with proper size when mounting a new tyre or retreading the tyre each time.
- Use only vegetable oil-based lubricants in mounting or demounting.
- Always ensure rim parts fit properly before inflating.
- Never tap the components with a tool/hammer/mallet while inflating the tyre.
- Never attempt to disassemble the multi-piece rims while inflating the tyre.
- Never inflate a tyre beyond 40 psi (275 kpa) to seat the beads. Make sure the beads are fully seated before adjusting the inflation pressure to the recommended level for vehicle operation.
- Use valve caps to keep the valves clear of debris and guard against inflation pressure loss.
- Stand well away from the work area when tyres are spin-balanced either on or off the vehicle.

MOUNTING/DEMOUNTING PROCEDURES

Tubed Tyre

- Inflate the tyre/rim assembly in an approved safety cage or equivalent restraint, and use a remote controlled clip-on air hose to inflate the tyre to the pressure recommended by vehicle manufacturer.
- Make sure that the rim components are fitted properly before inflation.
- Never tap the components with a mallet while inflating the tyre.
- Never attempt to remove the multi-piece rim while inflating the tyre.
- Never exceed the maximum inflation pressure on the sidewall of the tyre. If the bead fails to seat in place at 40 psi, please deflate, re-lubricate and reinflate the tyre.
- **WARNING :** Never pour or spray any flammable substance onto a tyre or wheel for any purpose whatsoever, because the residue of such substance could result in a fire or explosion, further causing an incident.
- **WARNING:** Never pour or spray a flammable substance such as gasoline or ethyl ether into a tyre and light it with a match to seat the bead of the tubeless tyre with the resulting explosion, because this practice is extremely dangerous and may result in a severe explosion or undetected damage to the tyre or rim which could lead to severe injury or death.
- **WARNING:** Replace a tyre on a rim with another tyre with a bead diameter exactly the same as the diameter of the rim on which will be mounted.

TYRE COMBINATION

SAFETT WARNING

- It is dangerous to drive a vehicle with improperly combined tyres. In such case. The operation of your vehicle may be seriously affected, even incident may occur, resulting in serious personal injury or death.
- Please refer to the owner’s manual and consult qualified tyre service professionals for proper tyre replacement.

DUAL MATCHING

- Tyres paired in a dual assembly should be matched in terms of tyre structure and dimension. Improperly matched tyres may result in irregular wear, rapid wear, and premature tyre failure.
- Failure to match tyres in the dual assembly may result in sudden tyre damage.
- For radial tyre, the dimensional tolerances for proper pairing are as follows:
 - Diameter: within 1/4 inch (6.4 mm) of each other
 - Circumference: within 3 /4 inch (19 mm) of each other

TYRE STORAGE

- Tyres should be stored indoors in a cool and dry place without puddles. Tyres should be kept away from electric generators/motors and heat sources such as hot pipes. Storage surfaces should be clean and free from grease, gasoline, diesel fuel, or other substances that could deteriorate the rubber.

SAFETT WARNING

- Im proper storage can damage your tyres in ways that may not be visible and can lead to a failure resulting in serious personal injury or death.
- The spare tyre in your vehicle is intended to be used when needed. The spare tyre carrier should not be used for long-term storage.

STORAGE

Recommendations for the storage of all tyres are as follows:

- Keep tyres stored from direct sunlight.
- Avoid storing tyres near a heat source or in the path of a direct flow of forced air.
- Keep tyres away from electric motors and generators which produce ozone.
- Never store tyres near petroleum products or chemicals (such as oil, grease, gasoline, solvent, etc.).
- Control vertical stacking height within 5 feet.
- Store unmounted tyres indoors in a dry location. Steel radial tyres may be severely damaged due to moisture existing inside the tyre at mounting. After pressurized, the moisture permeates the casing of the tyre and cause severe deterioration of the steel cords.
- Prior to mounting, inspect the inner surface of the tyre and remove all foreign matters and moisture.
- Keep compressed air used to inflate the tyre free of moisture.
- Failure to follow the above recommendations may result in sudden tyre fault, property damage and personal injury.

IRREGULAR WEAR-RADIAL TRUCK TYRE

There are many factors that may lead to irregular wear. Mechanical malfunction in the vehicle such as misalignment and uniformity of the tyre and wheel assembly, is the dominant factor. If, objectionable irregular wear is still visible after correction of these problems, the following measures are recommended by Guizhou Tyre:

- **Steer-axle tyres:** Check thrust angle and apply higher inflation pressure in the allowable range (100-115 psi).
- **Drive-axle tyres:** An increase of 10-15 psi makes the tyre less susceptible to irregular wear. Forward movement of the fifth wheel in the allowable range can significantly reduce irregular wear.

REGROOVING

- Only the tyres marked "Regroovable" on the sidewall should be regrooved. The tyres with a tread depth of less than 2/32" should not be regrooved.
- It is not recommended to regroove tyres with significant irregular wear. Regrooved tyres should not be mounted on the front axle.
- Regrooving should be restricted to the tyre's original tread grooves. A minimum rubber gauge of 4/32" shall be maintained between the top belt and the regrooved grooves.

REPAIR AND RETREADING

- Improperly repaired or retreaded truck tyres may result in unexpected tyre damage.
- Guizhou Tyre truck tyres should only be retreaded and repaired by trained personnel.
- Each tyre should be checked before operating the vehicle. Damaged tyres should be checked by the tyre dealer authorized by Guizhou Tyre.
- A puncture left unrepaired may result in further inner tube damage and eventual tyre destruction.
- Never apply plug-only repair to Guizhou Tyre truck tyres. An interior repair with plug or other approved materials required. Nail hole should be repaired only after the interior of the tyre is disassembled and checked.
- Never use an inner tube as a substitute for a proper tyre repair.

TYRE STRIP REMOVAL

- If The fourth (outer) belt is allowed to be removed and it may be omitted in retreading process.
- There are much more involved in the removal of the third belt. If it is inevitable to remove the third belt, it shall be replaced before retreading.
- A nail hole of 3/8" or less in diameter may be repaired in the crown area of either radial or bias tyre. A local repair in a radial tyre is required if any nail hole is larger than a 3/8".
- Biaslocal repair is required where the nail hole is greater than 1-1/4" in diameter and not perfectly round or perpendicular to the liner surface, or where the nail hole is greater than 3/8" in diameter and no combination patch plug is used.

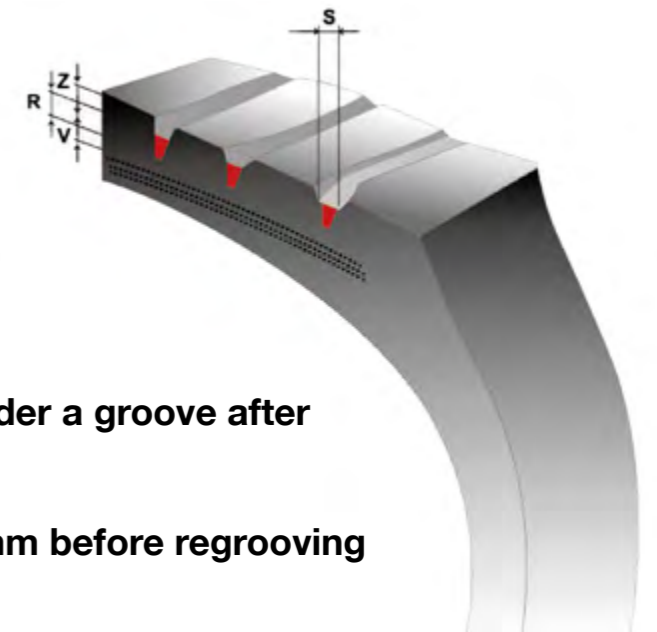
SAFETY WARNING

- Never pour or spray any flammable substance onto a tyre, rim or wheel for any purpose whatsoever, because the residue of such substance could result in a fire or explosion, further causing severe injury or death.



REGROOVING

- Tyre must be de-mounted from the rim before regrooving.
- Only a tyre marked REGROOVABLE on its sidewall may be regrooved.
- Regrooving is carried out when tyre is close to the tread wear indicator TWI
- Professionally-performed work does not affect retreading ability.
- Please ensure that tyres are only regrooved in accordance with the below instructions.



- R** Maximum recutting depth
- V** Minimum tread thickness under a groove after recutting 3 mm
- Z** Remaining tread depth 2-3 mm before regrooving
- S** Recutting width

REGROOVING PATTERNS



GR-S ①

Tire Size	Max.recutting Depth (mm)	Recutting Width (mm)
GL265D	2.5	5-8



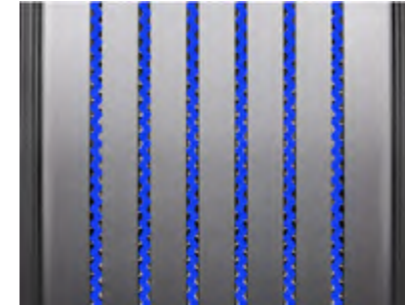
GR-D ①

Tire Size	Max.recutting Depth (mm)	Recutting Width (mm)
11R22.5	2.5	5-8
295/75R22.5	2.5	5-8
295/80R22.5	2.5	5-8
315/70R22.5	2.5	5-8
315/80R22.5	2.5	5-8
11R24.5	2.5	5-8
285/75R24.5	2.5	5-8



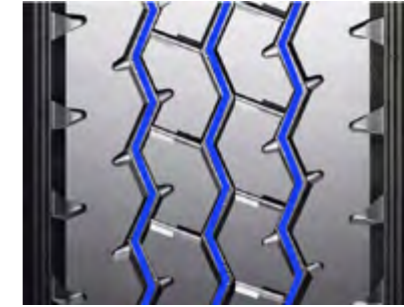
GR-D ②

Tire Size	Max.recutting Depth (mm)	Recutting Width (mm)
215/75R17.5	2.5	5-8
235/75R17.5	2.5	5-8
245/70R17.5	2.5	5-8
245/70R19.5	2.5	5-8
265/70R19.5	2.5	5-8
285/70R19.5	2.5	5-8
255/70R22.5	2.5	5-8
275/70R22.5	2.5	5-8
295/60R22.5	2.5	5-8
315/60R22.5	2.5	5-8



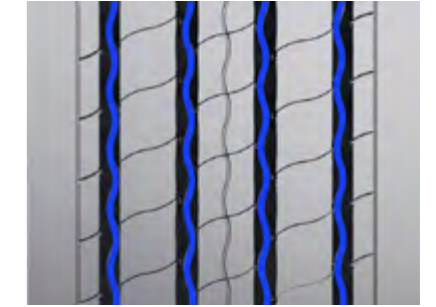
GL251T

Tire Size	Max.recutting Depth (mm)	Recutting Width (mm)
435/50R19.5	2	5-8
445/45R19.5	2	5-8
385/55R22.5	2	5-8
445/50R22.5	2	5-8
455/40R22.5	2	5-8



GC-T ①

Tire Size	Max.recutting Depth (mm)	Recutting Width (mm)
385/65R22.5	3	5-8
445/65R22.5	3	5-8



GR-A ①

Tire Size	Max.recutting Depth (mm)	Recutting Width (mm)
215/75R17.5	2	5-8
235/75R17.5	2	5-8
245/70R17.5	2	5-8
245/70R19.5	2	5-8
265/70R19.5	2	5-8
285/70R19.5	2	5-8
11R22.5	2.5	5-8
255/70R22.5	2.5	5-8
275/70R22.5	2.5	5-8
275/80R22.5	2.5	5-8
295/60R22.5	2.5	5-8
295/75R22.5	2.5	5-8
295/80R22.5	2.5	5-8
315/60R22.5	2.5	5-8
315/70R22.5	2.5	5-8
315/80R22.5	2.5	5-8
11R24.5	2.5	5-8
285/75R24.5	2.5	5-8



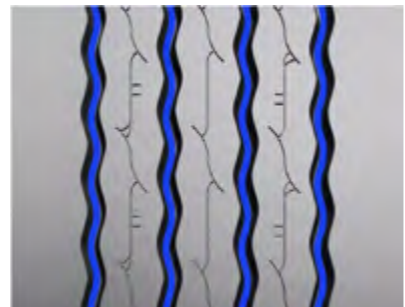
GC-D ①

Tire Size	Max.recutting Depth (mm)	Recutting Width (mm)
11R22.5	3	5-8
13R22.5	3	5-8
295/75R22.5	3	5-8
295/80R22.5	3	5-8
315/80R22.5	3	5-8
11R24.5	3	5-8
285/75R24.5	3	5-8



GR-T ①

Tire Size	Max.recutting Depth (mm)	Recutting Width (mm)
215/75R17.5	2	5-8
235/75R17.5	2	5-8
245/70R17.5	2	5-8
245/70R19.5	2	5-8
265/70R19.5	2	5-8
285/70R19.5	2	5-8
275/70R22.5	2	5-8



GR-T ②

Tire Size	Max.recutting Depth (mm)	Recutting Width (mm)
385/55R22.5	2	5-8
385/65R22.5	2	5-8



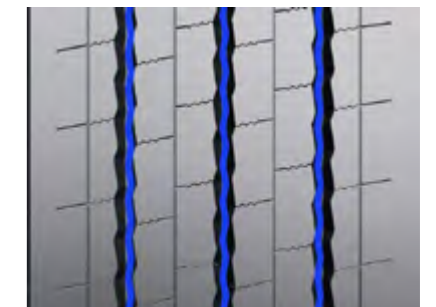
GC-A ①

Tire Size	Max.recutting Depth (mm)	Recutting Width (mm)
11R22.5	2.5	5-8
13R22.5	2.5	5-8
255/70R22.5	2.5	5-8
275/70R22.5	2.5	5-8
295/80R22.5	2.5	5-8
315/80R22.5	2.5	5-8
11R24.5	2.5	5-8



GM-A ①

Tire Size	Max.recutting Depth (mm)	Recutting Width (mm)
11R22.5	2.5	5-8
315/80R22.5	2.5	5-8
11R24.5	2.5	5-8



GU-A ①

Tire Size	Max.recutting Depth (mm)	Recutting Width (mm)
275/70R22.5	2.5	5-8



ADVANCE TYRE EU

ADVANCETYRE.COM
SALES@ADVANCETYRE.BIZ

V2024